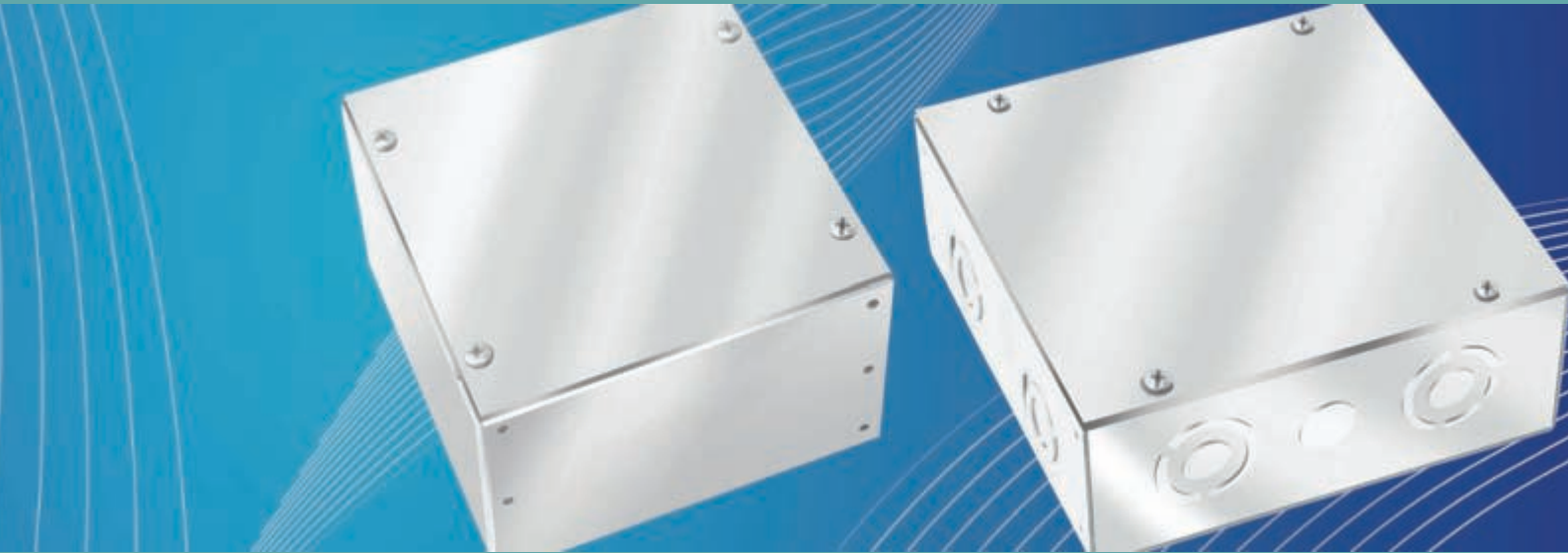




6

PULL BOXES

- 6-1 Indoor
- 6-2 Outdoor

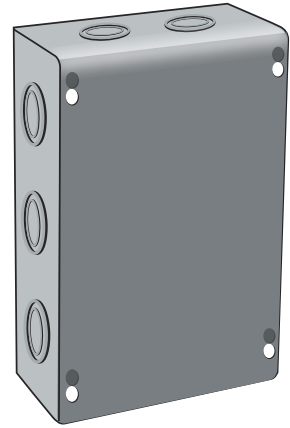


Application

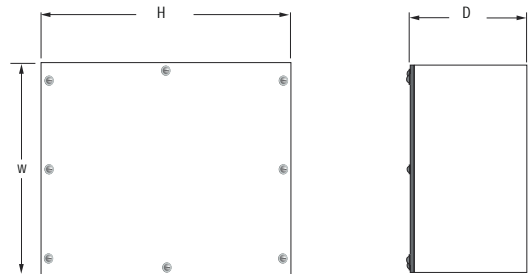
- Used as wiring boxes, junction and pull boxes
- Intended for indoor

Construction

- Enclosure and cover are fabricated from steel
- All continuous welded seams are finished smooth



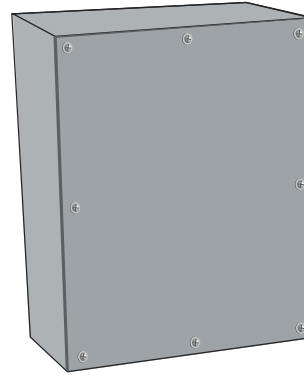
SIZE (In)	ITEM NUMBER
W X H X D	G ^{1,2}
6X6X4	26106062
6X6X6	26106063
6X8X4	26106082
6X8X6	26106083
6X12X4	26106122
8X10X4	26108102
8X8X4	26108082
8X8X6	26108083
8X10X6	26108103
8X12X4	26108122
8X12X6	26108123
10X10X4	26110102
10X10X6	26110103
10X12X4	26110122
10X12X6	26110123
12X12X4	26112122
12X12X6	26112123
12X18X4	26112182
12X18X6	26112183
12X24X4	26112242
18X18X6	26118183
18X24X6	26118243
24X24X6	26124243



¹G(Pre-Galvanized)
²H(Hot-Dip Galvanized) and
 PC(Powder Coated) also available.

Application

- Used as wiring boxes, junction and pull boxes
- Intended for indoor or outdoor use
- Protects against windblown dust, rain, sleet, external ice formation and dripping noncorrosive liquids



Construction

- Enclosure and cover are fabricated from steel, (see table for gauge)
- All continuous welded seams are finished smooth
- Enclosure standard without knockouts
- Cover is attached with captivated gasketed screws
- Cover has a fixed, oil and water resistant gasket
- #10-32 ground screw is furnished for optional ground lug kit

Standards

- UL 508 listed, Type 3 and Type 12
- Conforms to NEMA standard for type 3 and type 12

SIZE (In) W X H X D	Body Gauge	Cover Gauge	ITEM NUMBER G ^{1,2}
6x6x4	14	14	26506062
6x8x4	14	12	26506082
8x8x4	14	12	26508082
8x10x4	14	12	26508102
10x10x4	14	12	26510102
12x12x4	14	12	26512122
10x12x6	14	12	26510123
12x12x6	14	12	26512123
12x16x6	14	12	26512163
16x16x6	14	10	26516163
16x20x6	14	10	26516203
24x24x6	14	10	26524243
20x20x8	14	10	26520204
20x24x8	14	10	26520244
24x24x8	14	10	26524244
30x30x12	14	10	26530306
36x36x12	14	10	26536366

¹G(Pre-Galvanized)
²H(Hot-Dip Galvanized) and
 PC(Powder Coated) also available.

